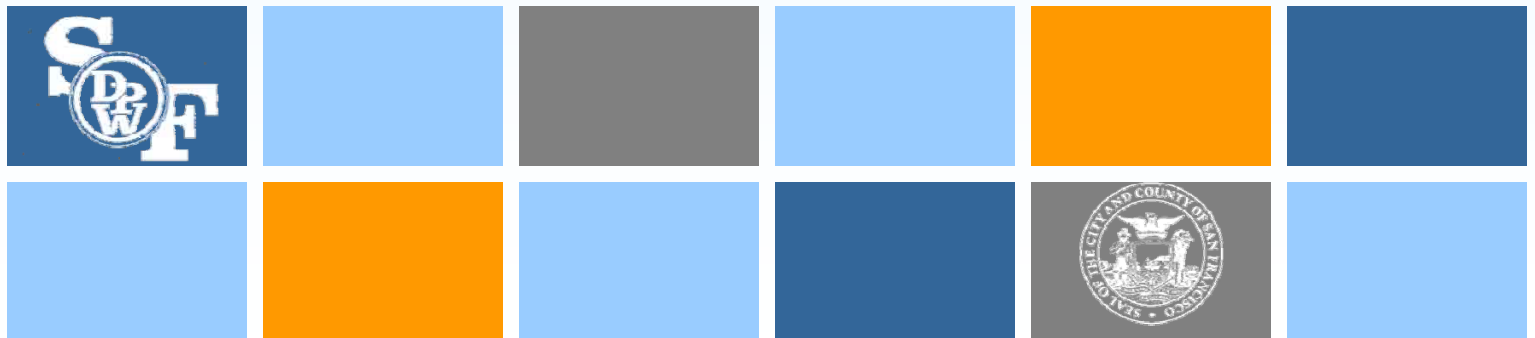


# EARTHQUAKE SAFETY AND EMERGENCY RESPONSE BOND

Presentation to the  
Capital Planning Committee

November 28, 2011

- **Financial Report**
- **Public Safety Building (PSB)**
- **Neighborhood Fire Stations (NFS)**
- **Auxiliary Water Supply System (AWSS)**



# ESER 1 – Budget Overview



Earthquake Safety & Emergency Response Bond

Project Phase	PSB	NFS	AWSS	Total
Pre-Bond Expenditure	5,369,492	1,015,669	1,316,963	7,702,124
Pre-Design / Planning	1,505,637	1,712,831	5,425,000	8,643,468
Design	22,775,827	6,970,500	11,790,000	41,536,327
Construction Administration	14,415,929	5,791,000	14,720,000	34,926,929
Construction	194,933,115	48,510,000	69,148,037	312,591,152
<b>Subtotal</b>	<b>239,000,000</b>	<b>64,000,000</b>	<b>102,400,000</b>	<b>405,400,000</b>
Accountability/ CGOBOC/ COI	4,000,000	1,100,000	1,800,000	6,900,000
<b>ESER Total</b>	<b>243,000,000</b>	<b>65,100,000</b>	<b>104,200,000</b>	<b>421,300,000</b>

# ESER 1– Financing



Earthquake Safety & Emergency Response Bond

Component	Budget	First Bond	Second Bond*	Total Funding	Future Sales
PSB	239,000,000	66,596,284	160,620,973	227,217,257	11,782,743
NFS	64,000,000	3,627,397	21,073,913	24,701,310	39,298,690
AWSS	102,400,000	8,396,929	31,505,626	39,902,555	62,497,445
Accountability/CGOBOC/COI	6,900,000	899,390	1,334,488	2,233,878	4,666,122
<b>Total</b>	<b>412,300,000</b>	<b>79,520,000</b>	<b>214,535,000</b>	<b>294,055,000</b>	<b>118,245,000</b>

\*Tentative Receipt of Second Bond Sale Proceeds in February 2012

# ESER 1– Expenditures, Encumbrances and City Job Order Allocations



Earthquake Safety & Emergency Response Bond

The total expenditures, encumbrances and City job order allocations thru September 30, 2011 is \$32,816,571. This includes \$16,595,100 in expenditures and encumbrances and \$16,221,471 allocated in City job orders. The total sum represents 41% of the commitment of the First Bond Sale.

Component	A Budget	B First Bond Sale Appropriation	C Expenditures, Encumbrances & Allocations	D (= C/B) Percentage of Budget	E (= B-C) Balance
PSB	239,000,000	63,096,284*	26,382,222	41.81%	36,714,062
NFS	64,000,000	7,127,398	4,133,358	57.99%	2,994,040
AWSS	102,400,000	8,396,928	1,659,624	19.76%	6,737,304
Accountability/ CGOBOC/COI	6,900,000	899,390	641,367	71.31%	258,023
<b>Total</b>	<b>412,300,000</b>	<b>79,520,000</b>	<b>32,816,571</b>	<b>41.27%</b>	<b>46,703,429</b>

\*The allocation for PSB was reduced by \$3.5M from \$66,596,284 to \$63,096,284 and re-allocated to NFS. Once the proceeds of the Second Bond Sale are received, the \$3.5M will be re-allocated to the PSB.

# ESER 1– Status, Pre-Second Bond Sale



Earthquake Safety & Emergency Response Bond

Component	A Budget	B First Bond Sale Appropriation	C Total Allocations	D Forecast October 2011 to February 2012	E (= B-C-D) Balance	F =(C+D)/ B %
PSB	239,000,000	63,096,284	26,382,222	36,592,085	121,977	99.8%
NFS	64,000,000	7,127,398	4,133,358	2,004,081	989,959	86.1%
AWSS	102,400,000	8,396,928	1,659,624	2,536,641	4,200,663	50.6%
Accountability/ CGOBOC/COI	6,900,000	899,390	641,367	-	258,023	71.3%
<b>Total</b>	<b>412,300,000</b>	<b>79,520,000</b>	<b>32,816,571</b>	<b>41,132,807</b>	<b>5,570,622</b>	<b>93.0%</b>

# Public Safety Building – Elements



Earthquake Safety & Emergency Response Bond

**Six Story, 300,000 sq. ft, \$168.5M estimated construction cost, comprised of:**

- Police Command Center – relocated from the HOJ
- New Mission Bay Fire Station
- Southern District Police Station – relocated from the HOJ

**Historic renovation of Fire Station #30**

**Essential Seismic Facility**

**LEED Gold Rating**

# Public Safety Building – Current



Earthquake Safety & Emergency Response Bond

- Design Approvals from SFRA and Arts Commission Phase I + II
- Three SFAC Art Enrichment projects in development
- Contractors' Town Hall Outreach in June 2011
- Design Development Phase Completed October 2011 – CD Phase to commence in November
- (Site) Permit Application Submission in October 2011
- 50 Bid Trade Packages scheduled – 10 bid & awarded or being bid
- Construction Management Support Services solicitation complete
- Materials Testing & Special Inspection solicitation process underway



# Public Safety Building – Projected

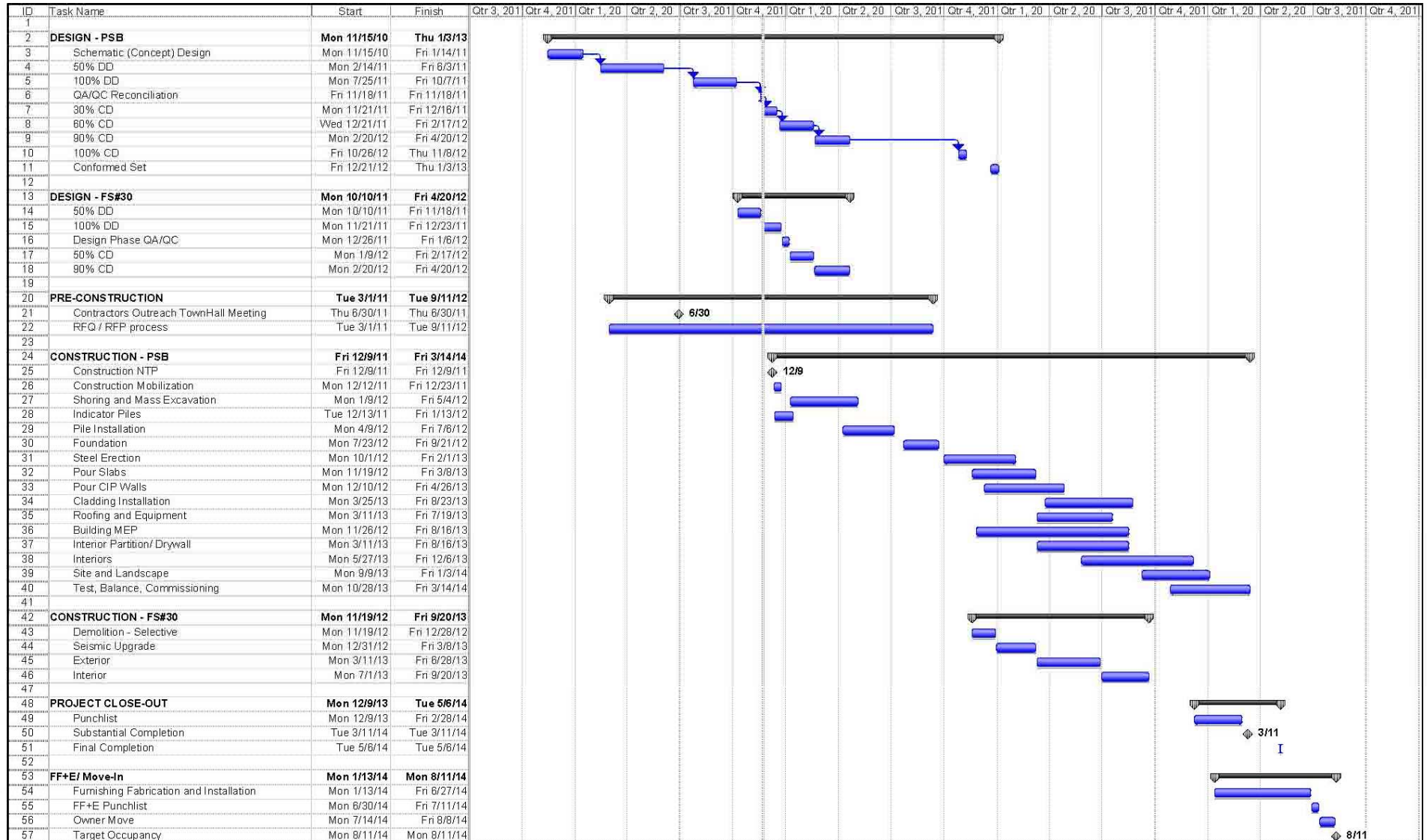
Earthquake Safety & Emergency Response Bond

- Construction Notice-to-Proceed anticipated December 9, 2011.
- Indicator Pile installation to begin December 13, 2011.
- Foundation work will begin in July 2012, followed by Steel Erection in October 2012.
- All Trade Package Bids will be bought out by September 2012.
- Curtain Wall Fabrication to start in November 2012.
- Fire Station #30 Rehabilitation Work to start November 2012.
- Substantial Completion – March 2014.

# Public Safety Building – Schedule



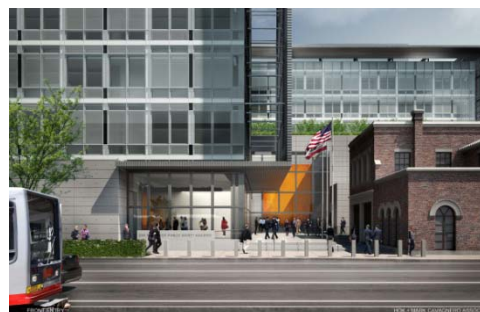
## Earthquake Safety & Emergency Response Bond



# Public Safety Building



Earthquake Safety & Emergency Response Bond



# Neighborhood Fire Stations – Concurrent Renovation Strategies



Earthquake Safety & Emergency Response Bond

## Focused Scope Program

- Correct severe deficiencies of selected building components, e.g. roofs, showers, generators

## Comprehensive Renovation Program

- Correct all deficiencies pertaining to emergency response and health and safety issues, e.g. emergency generator, showers, building exterior, windows
- Renovate, renew, or replace major building systems, e.g. heating/ventilation, food preparation area

## Seismic Improvement Program

- Improve resistance to seismic forces, consistent with current building codes, e.g. apparatus doors
- Complete a comprehensive renovation as described above

# Neighborhood Fire Stations (NFS) – Current



Earthquake Safety & Emergency Response Bond

## Groups 1 and 2 Focused Scope Projects

### Roofs

- First 4 roof replacements at Stations 6, 38, 41 and 42 are on track to complete within budget and on schedule in December 2011.

### Showers

- Shower renovation design underway and completing in November 2011.

### Building and Systems

- Building envelope project scheduled for design in December 2011, with construction to follow in spring 2012.

# Neighborhood Fire Stations (NFS) – Current



Earthquake Safety & Emergency Response Bond

## **Group 3 Seismic and Comprehensive Projects**

- Pre-Design reports completed and reviewed by SFFD.
- SFFD approved Seismic Design Criteria prepared by DPW.
- Cost estimation on schedule to complete in November 2011.
- Groups 1, 2, and 3 baseline budget and final scope confirmation to be completed in Dec. 2011.

## **Fire Boat Station 35**

- Programming report is being prepared by DPW for SFFD approval of preferred option.

## **Equipment Logistics Center**

- Programming report is being prepared by DPW for SFFD approval of scope direction.



# NFS – Projected

Earthquake Safety & Emergency Response Bond

## Groups 1 and 2 Focused Scope Projects

### Roofs

- Remaining 9 roof replacement projects scheduled for design in January – February 2012, with construction to follow in summer 2012.

### Showers

- Shower renovation construction scheduled to begin in February 2012.

### Building and Systems

- Building envelope project construction to begin in spring 2012.
- Emergency generators design-build package to be prepared spring 2012, with construction to follow in summer 2012.
- Mechanical radiator and HVAC packages to be prepared spring 2012, with construction to follow in fall 2012.

## **Group 2 Focused Scope Projects**

- Station 44 assessment and reporting to be completed in January 2012, with construction date to be coordinated with final schedule of seismic and comprehensive project station closures.

## **Group 3 Seismic and Comprehensive Projects**

- Group 3 projects begin design in January 2012.

## **Fire Boat Station 35**

- Environmental analysis of SFFD preferred option to proceed in 2012.

## **Equipment Logistics Center**

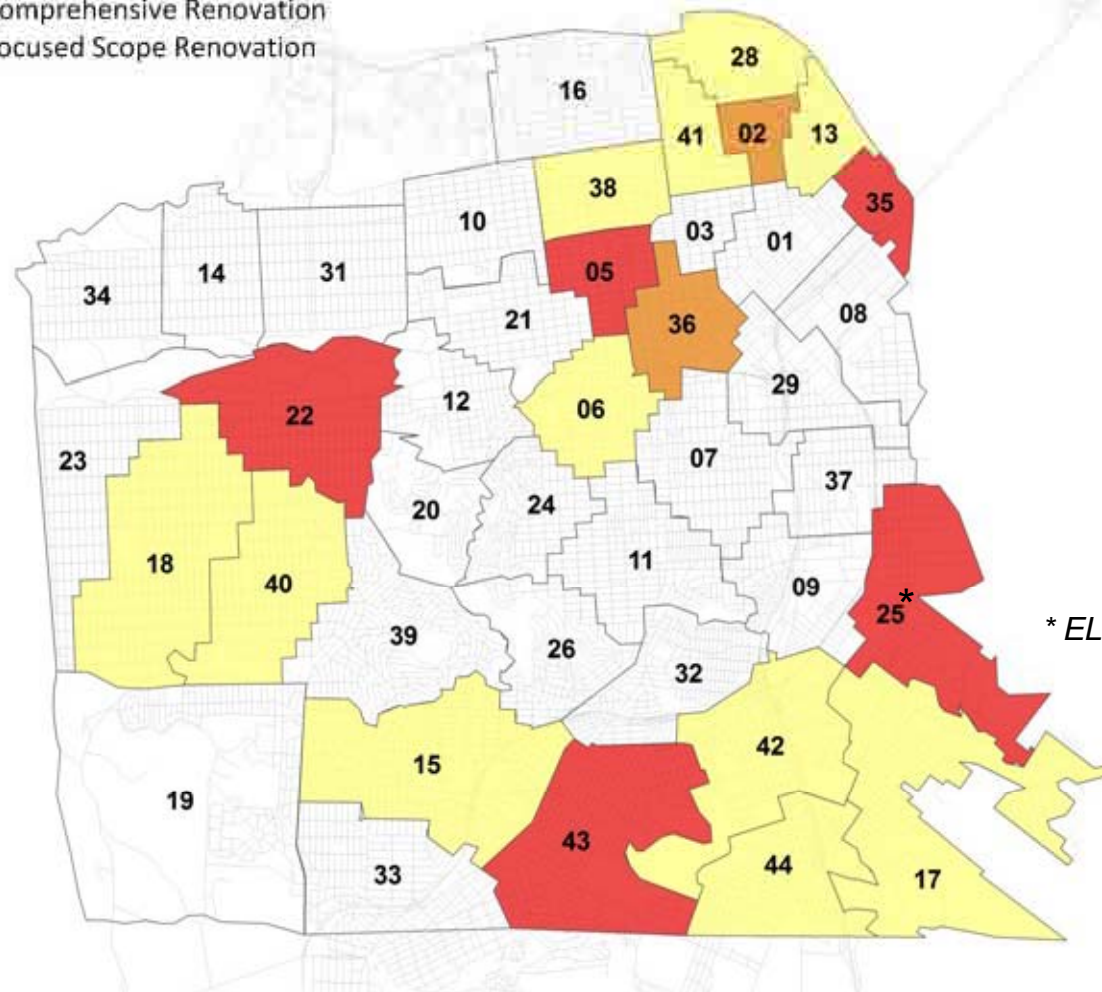
- Design of SFFD approved program to proceed in 2012.

# Neighborhood Fire Stations



Earthquake Safety & Emergency Response Bond

- Fire Station Projects**
- Seismic Improvement and Comprehensive Renovation
  - Comprehensive Renovation
  - Focused Scope Renovation

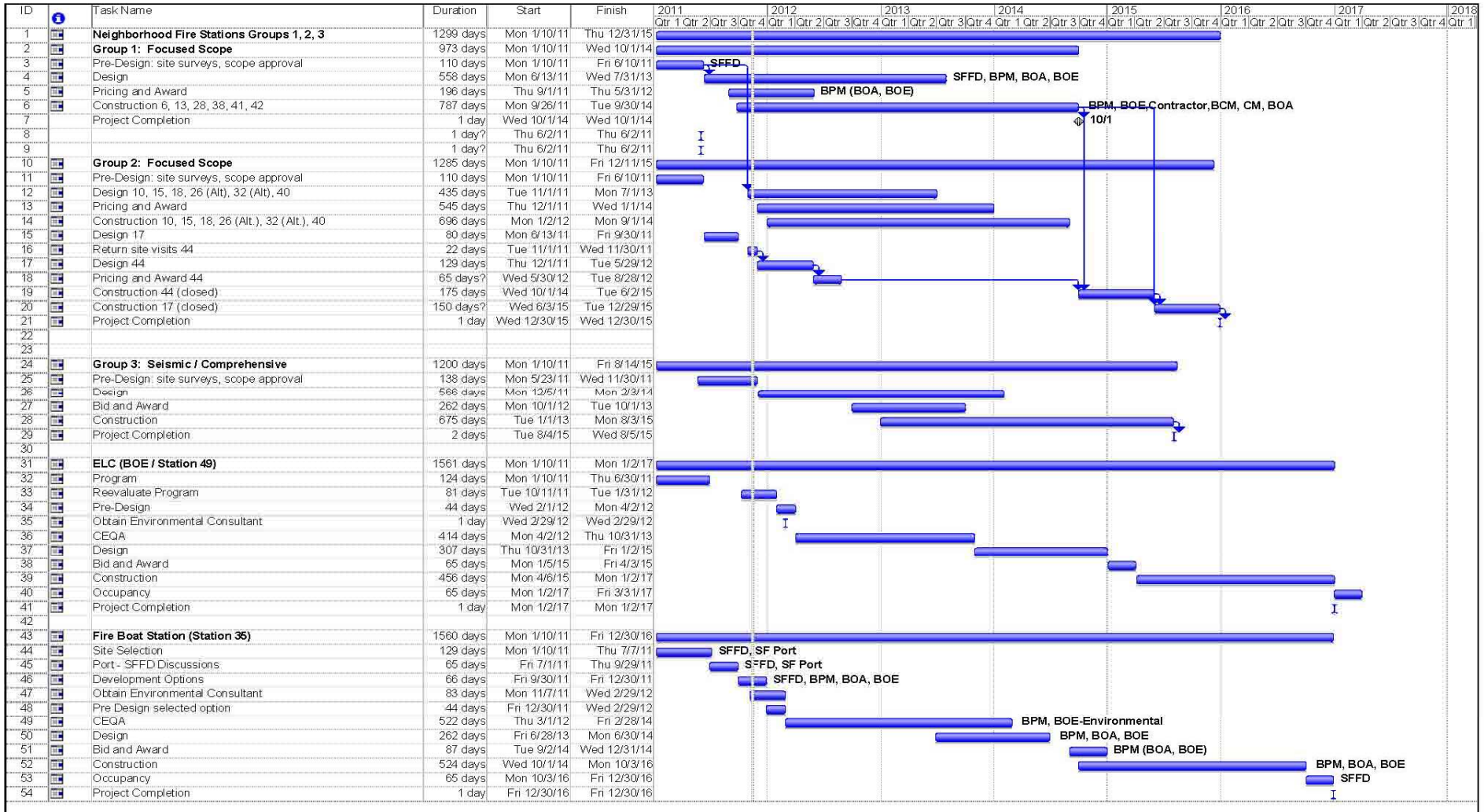


\* ELC seismic upgrade

# Neighborhood Fire Stations - Schedule



## Earthquake Safety & Emergency Response Bond



## **AWSS Modernization – In Planning**

- AECOM/AGS Joint Venture under contract to provide planning support services; draft project report due by November 2012
- AWSS pipe network improvements to follow adoption of plan

## **AWSS Core Facilities – In Planning**

- Jones Tank, Pump Station 1, and Twin Peaks Reservoir – Conceptual Engineering Report (CER) Phase completion scheduled by February 2012
- Ashbury Tank – CER Phase completion scheduled by March 2012
- Pump Station 2 – CER Phase completion scheduled by October 2012

## **AWSS Cisterns – In Planning**

- Site selection underway; will coordinate with AWSS planning study

# AWSS – Work Awarded



Earthquake Safety & Emergency Response Bond

Ashbury Tank	Geotechnical Engineering	\$44,000
Jones Street Tank	Geotechnical Engineering	\$46,000
Pumping Station 1	Geotechnical Engineering	\$32,000
Pumping Station 2	Geotechnical Engineering	\$78,000
Twin Peaks Reservoir	Geotechnical Engineering	\$130,000
Twin Peaks Reservoir	Materials Testing	\$12,000

# AWSS – Projected



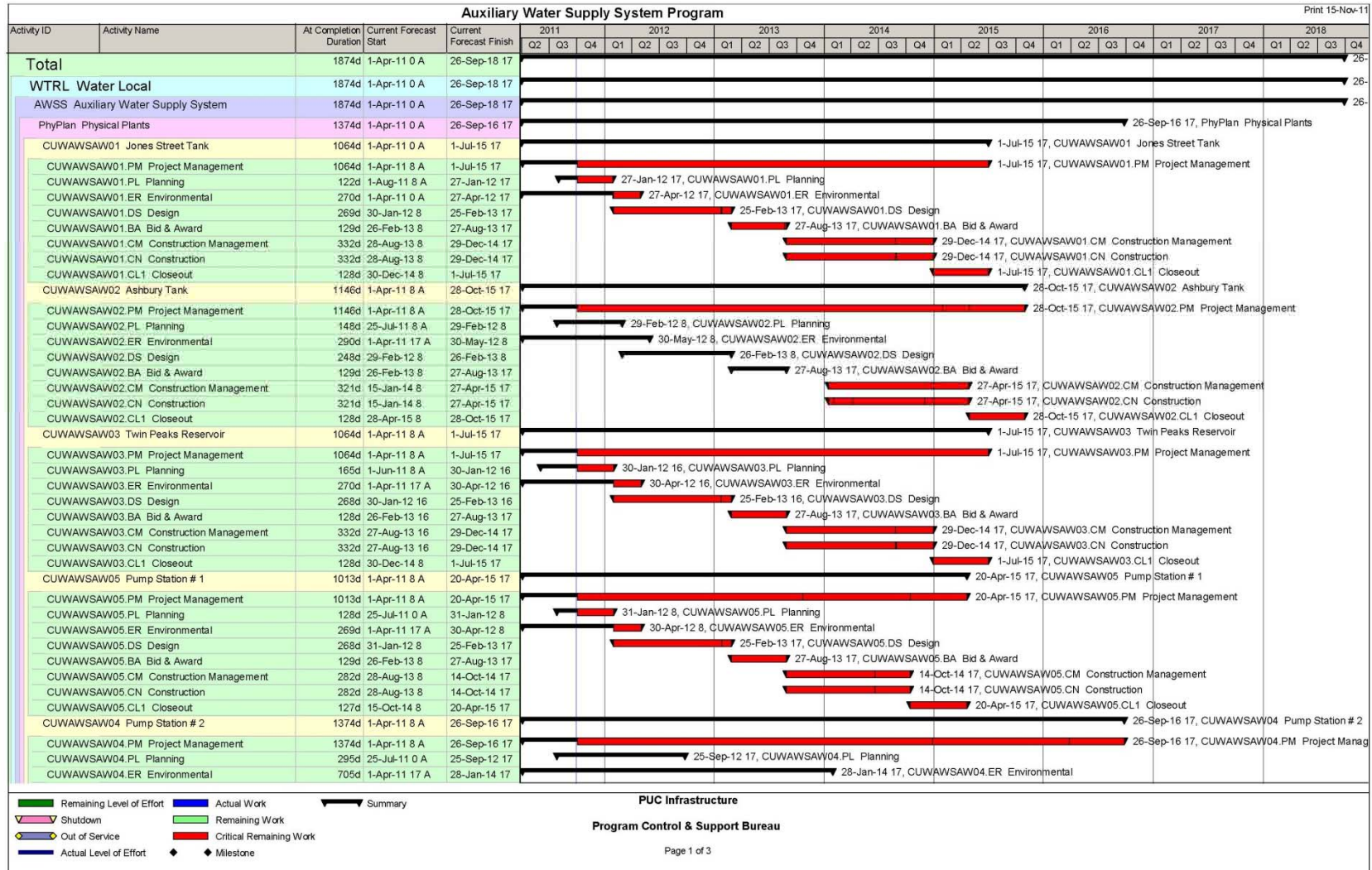
## Earthquake Safety & Emergency Response Bond

Ashbury Tank	\$3,900,000
Jones Street Tank	\$4,300,000
Pumping Station 1	\$2,400,000
Twin Peaks Reservoir	\$2,600,000
Cisterns	\$7,500,000

# AWSS - Schedule



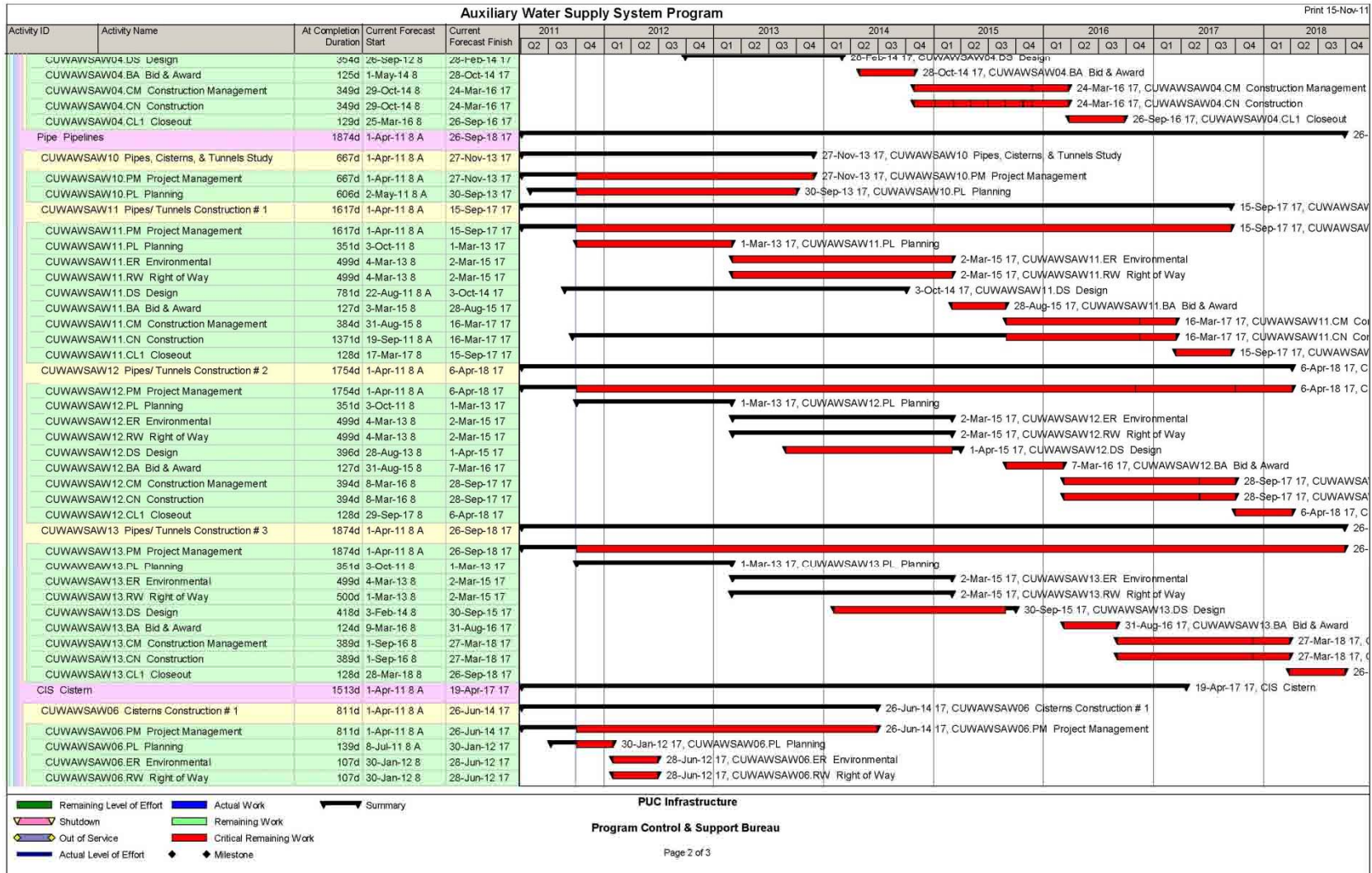
## Earthquake Safety & Emergency Response Bond



# AWSS - Schedule

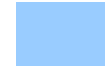


## Earthquake Safety & Emergency Response Bond





# Conclusion



## Questions - Discussion



San Francisco  
**Water**  
**Power**  
**Sewer**

Services of the San Francisco Public Utilities Commission



EARTHQUAKE SAFETY AND EMERGENCY RESPONSE BOND