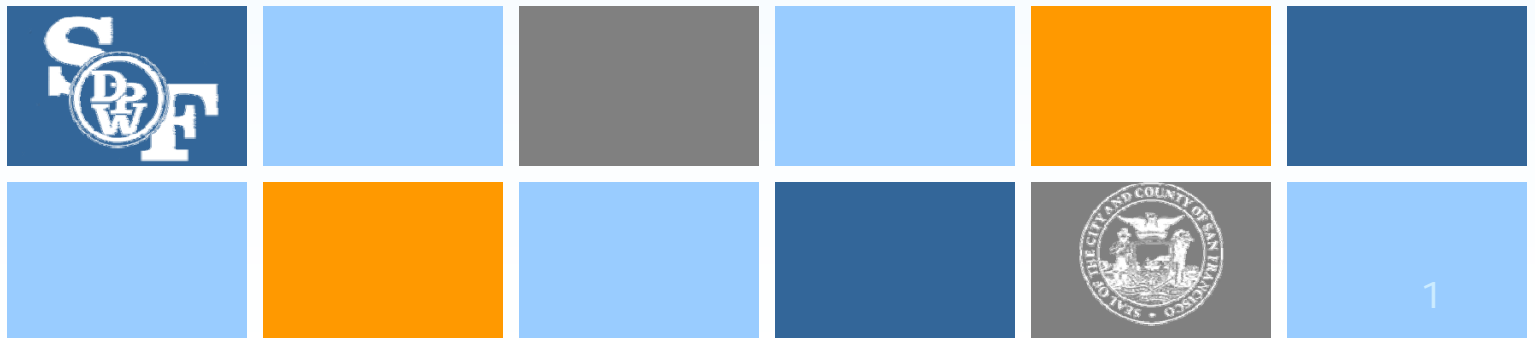


# EARTHQUAKE SAFETY AND EMERGENCY RESPONSE BOND

Status Report - November 17, 2011

Presentation to the  
Citizens' General Obligation Bond Oversight Committee

- Major Accomplishments
- Public Safety Building (PSB)
- Neighborhood Fire Stations (NFS)
- Auxiliary Water Supply System (AWSS)
- Financial Report



# ESER 1 - Major Accomplishments



Earthquake Safety & Emergency Response Bond

1. Earned PSB project approval from the SFRA
2. Earned PSB SFAC Civic Design Approvals, Phases I and II
3. Ceremonial Groundbreaking for PSB in September 2011
4. Initiated 4 NFS roofing projects in September
5. Collected Port of SF acceptance of Fire Boat Station project at Pier 22 ½ - Station 35
6. Awarded contract to define modernization plan for the AWSS
7. Began planning work for AWSS Twin Peaks Reservoir, Ashbury Tank, Jones Street Tank, and Pumping Stations 1 & 2
8. Began planning work for new AWSS cisterns

# ESER 1 - October to December 2011



Earthquake Safety & Emergency Response Bond

## PSB

- Completion of Design Development and Permit Application
- Hard Construction to commence December 2011

## NFS

- Focused Scope Group 1 complete 4 roof replacement projects
- Focused Scope Group 1 and 2 complete shower project design
- Focused Scope Group 3 project reports finalization and estimation
- Fire Boat Station 35 complete preliminary program and assessment
- Equipment Logistics Center complete program revisions

## AWSS

- Proceed with AWSS modernization planning work
- Continue conceptual engineering work for Twin Peaks Reservoir, Ashbury Tank, Jones Street Tank, and Pumping Stations 1 & 2
- Continue Cistern planning work
- Install new fill pipe at Twin Peaks Reservoir



# Public Safety Building – Status

Earthquake Safety & Emergency Response Bond

- Design Approvals from SFRA and Arts Commission Phase I + II
- Three SFAC Art Enrichment projects in development
- Contractors' Town Hall Outreach in June 2011
- Design Development Phase Completed October 2011 – CD Phase to commence in November
- (Site) Permit Application Submission in October 2011
- 50 Bid Trade Packages scheduled – 10 bid & awarded or being bid
- Construction Management Support Services solicitation complete
- Materials Testing & Special Inspection solicitation process underway

# Public Safety Building – Schedule



Earthquake Safety & Emergency Response Bond

ID	Task Name	Start	Finish	Duration	2011				2012				2013				2014			
					Q1	Q2	Q3	Q4	Q1	Q2	Q3	Q4	Q1	Q2	Q3	Q4	Q1	Q2	Q3	
1	Schematic Design	11/15/2010	1/14/2011	9w	■															
2	Design Development + QA/QC	1/17/2011	11/18/2011	44w	■	■	■	■	■											
3	Construction Document	11/21/2011	12/21/2012	57w					■	■	■	■	■							
4	Permitting	8/30/2011	11/16/2012	63.8w					■	■	■	■	■							
5	Trade Package Bid + Award	5/24/2011	8/30/2012	66.6w			■	■	■	■	■	■	■							
6	Construction + Commissioning	12/1/2011	3/14/2014	119.4w					■	■	■	■	■	■	■	■	■	■	■	■
7	FF+E Installation + Move-In	1/13/2014	8/11/2014	30.2w															■	■

# Public Safety Building



Earthquake Safety & Emergency Response Bond





# Neighborhood Fire Stations – Status

Earthquake Safety & Emergency Response Bond

## **Groups 1 and 2 Focused Scope Projects**

- First 4 roof replacements at Stations 6, 38, 41 and 42 are on track to complete within budget and on schedule in December 2011.
- Shower renovation project in design, with construction to follow in Feb. 2012.

## **Group 3 Seismic and Comprehensive Projects**

- Pre-Design reports completed and reviewed by SFFD.
- Cost estimation on schedule to complete in November 2011.
- SFFD approved Seismic Design Criteria prepared by DPW.
- Group 1, 2, and 3 baseline budget and final scope confirmation to be completed by Dec. 2011.

## **Fire Boat Station 35**

- Programming report is being prepared by DPW for SFFD approval of preferred option, with environmental analysis to follow.

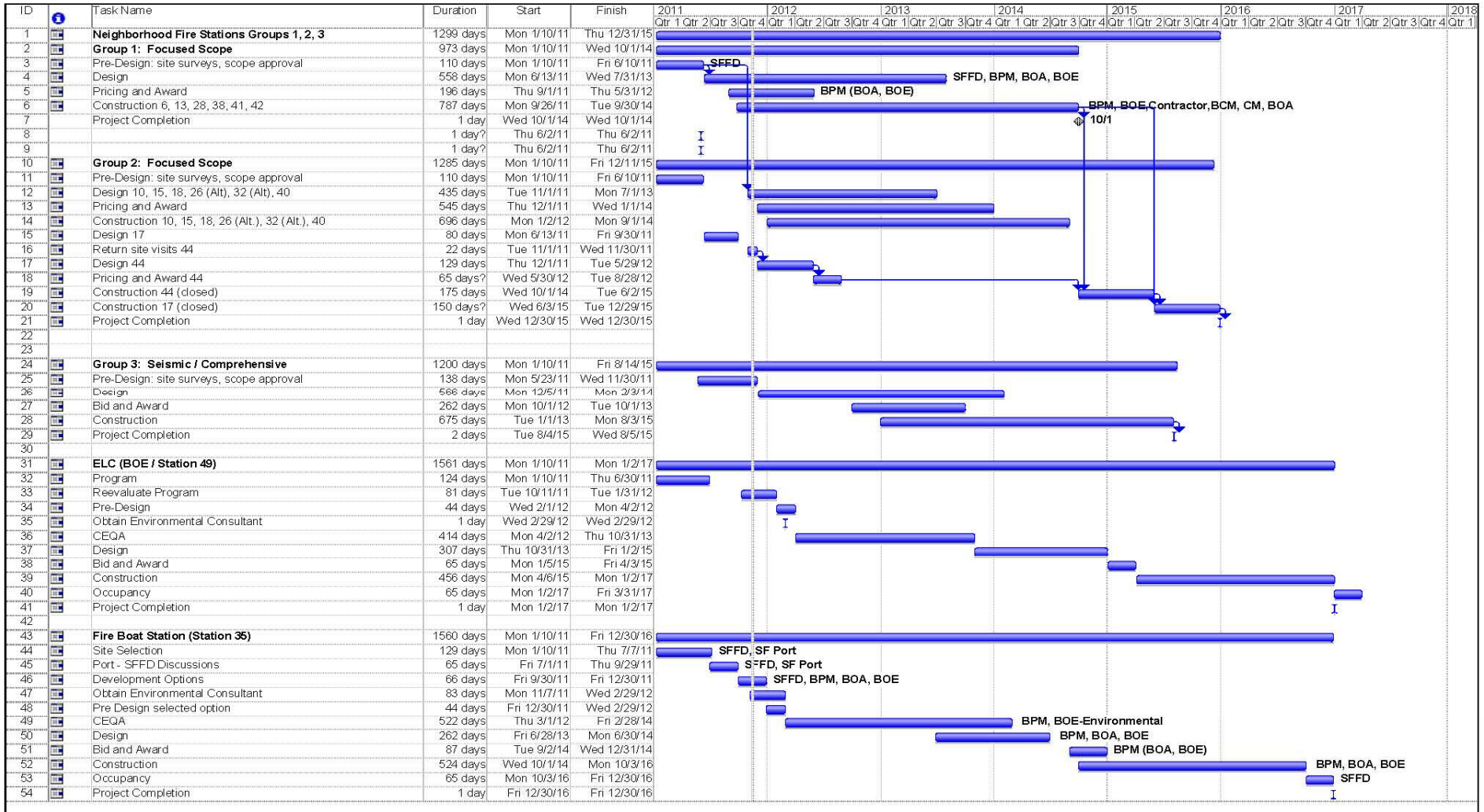
## **Equipment Logistics Center**

- Programming report is being prepared by DPW with design to follow.

# Neighborhood Fire Stations - Schedule



## Earthquake Safety & Emergency Response Bond



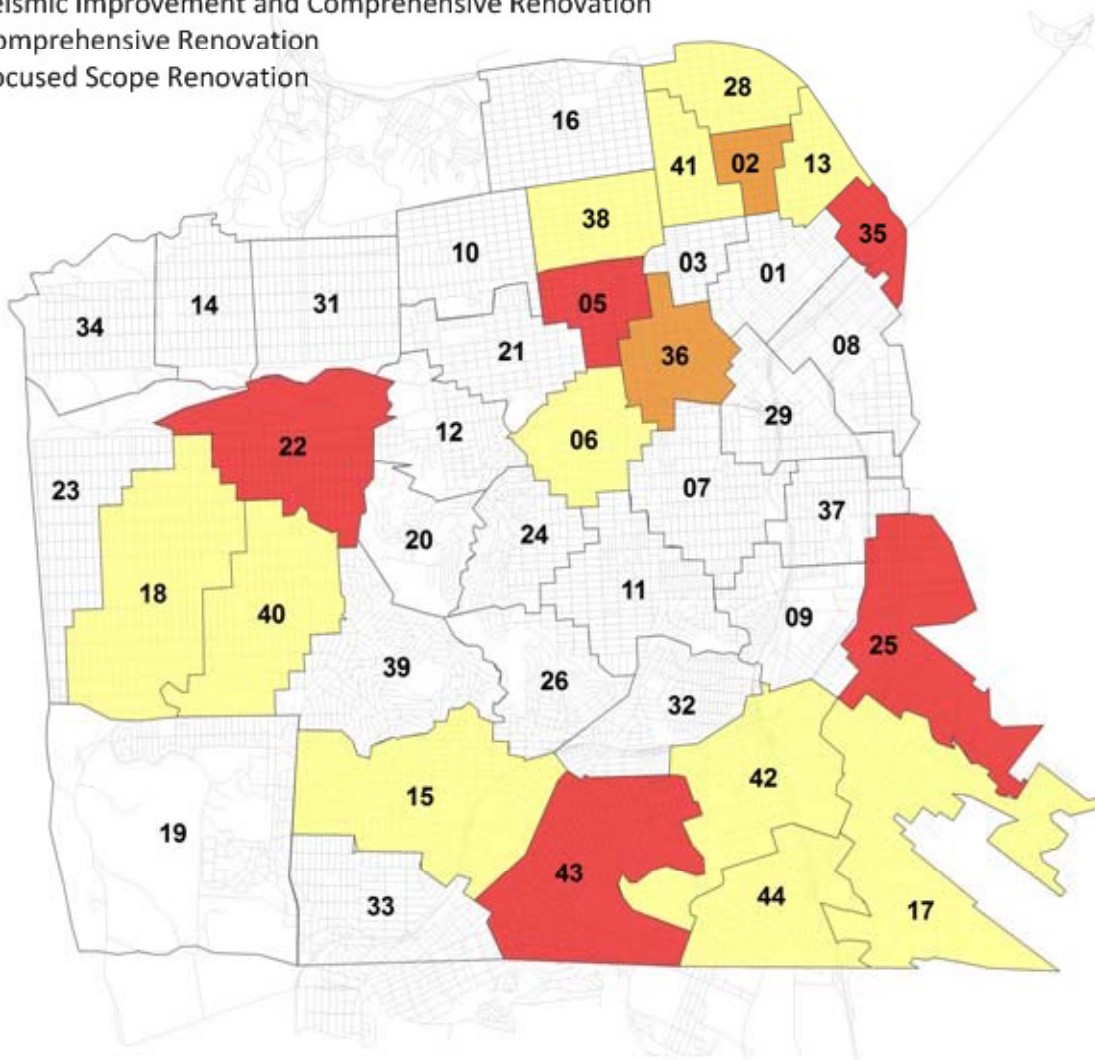
# Neighborhood Fire Stations



Earthquake Safety & Emergency Response Bond

## Fire Station Projects

-  Seismic Improvement and Comprehensive Renovation
-  Comprehensive Renovation
-  Focused Scope Renovation



## **AWSS Modernization – Planning**

- AECOM/AGS Joint Venture under contract to provide planning support services; draft project report due by November 2012
- AWSS pipe network improvements to follow adoption of plan

## **AWSS Core Facilities – Planning**

- Jones Tank, Pump Station 1, and Twin Peaks Reservoir – Conceptual Engineering Report (CER) Phase completion scheduled by February 2012
- Ashbury Tank – CER Phase completion scheduled by March 2012
- Pump Station 2 – CER Phase completion scheduled by October 2012

## **AWSS Cisterns – Planning**

- Site selection underway; will coordinate with AWSS planning study

# AWSS – Schedule



## Earthquake Safety & Emergency Response Bond

Auxiliary Water Supply System Program													Print 15-Nov-11																							
Activity ID	Activity Name	At Completion Duration	Current Forecast Start	Current Forecast Finish	2011				2012				2013				2014				2015				2016				2017				2018			
					Q2	Q3	Q4	Q1	Q2	Q3	Q4	Q1	Q2	Q3	Q4	Q1	Q2	Q3	Q4	Q1	Q2	Q3	Q4	Q1	Q2	Q3	Q4	Q1	Q2	Q3	Q4	Q1	Q2	Q3	Q4	
<b>Total</b>					26-Sep-18 17																															
<b>WTRL Water Local</b>					26-Sep-18 17																															
<b>AWSS Auxiliary Water Supply System</b>					26-Sep-18 17																															
PhyPlan Physical Plants					26-Sep-16 17, PhyPlan Physical Plants																															
	CUWAWSAW01 Jones Street Tank	1064d	1-Apr-11 0 A	1-Jul-15 17	1-Jul-15 17, CUWAWSAW01 Jones Street Tank																															
	CUWAWSAW02 Ashbury Tank	1146d	1-Apr-11 8 A	28-Oct-15 17	28-Oct-15 17, CUWAWSAW02 Ashbury Tank																															
	CUWAWSAW03 Twin Peaks Reservoir	1064d	1-Apr-11 8 A	1-Jul-15 17	1-Jul-15 17, CUWAWSAW03 Twin Peaks Reservoir																															
	CUWAWSAW05 Pump Station # 1	1013d	1-Apr-11 8 A	20-Apr-15 17	20-Apr-15 17, CUWAWSAW05 Pump Station # 1																															
	CUWAWSAW04 Pump Station # 2	1374d	1-Apr-11 8 A	26-Sep-16 17	26-Sep-16 17, CUWAWSAW04 Pump Station # 2																															
<b>Pipe Pipelines</b>					26-Sep-18 17																															
	CUWAWSAW10 Pipes, Cisterns, & Tunnels Study	667d	1-Apr-11 8 A	27-Nov-13 17	27-Nov-13 17, CUWAWSAW10 Pipes, Cisterns & Tunnels Study																															
	CUWAWSAW11 Pipes/ Tunnels Construction # 1	1617d	1-Apr-11 8 A	15-Sep-17 17	15-Sep-17 17, CUWAWSAW11 Pipes/ Tunnels Construction # 1																															
	CUWAWSAW12 Pipes/ Tunnels Construction # 2	1754d	1-Apr-11 8 A	6-Apr-18 17	6-Apr-18 17, CUWAWSAW12 Pipes/ Tunnels Construction # 2																															
	CUWAWSAW13 Pipes/ Tunnels Construction # 3	1874d	1-Apr-11 8 A	26-Sep-18 17	26-Sep-18 17, CUWAWSAW13 Pipes/ Tunnels Construction # 3																															
<b>CIS Cistern</b>					19-Apr-17 17, CIS Cistern																															
	CUWAWSAW06 Cisterns Construction # 1	811d	1-Apr-11 8 A	26-Jun-14 17	26-Jun-14 17, CUWAWSAW06 Cisterns Construction # 1																															
	CUWAWSAW07 Cisterns Construction # 2	973d	1-Apr-11 8 A	23-Feb-15 17	23-Feb-15 17, CUWAWSAW07 Cisterns Construction # 2																															
	CUWAWSAW08 Cisterns Construction # 3	1344d	1-Apr-11 8 A	12-Aug-16 17	12-Aug-16 17, CUWAWSAW08 Cisterns Construction # 3																															
	CUWAWSAW09 Cisterns Construction # 4	1513d	1-Apr-11 8 A	19-Apr-17 17	19-Apr-17 17, CUWAWSAW09 Cisterns Construction # 4																															
<b>CUW-MileSton AWSS Program Milestones</b>					5-Nov-13 17, CUW-MileSton AWSS Program Milestones																															
A9780	Provide Bond Language	0d		1-Feb-13 17*	◆ Provide Bond Language																															
A9790	ESER # 2 Bond Issue Election	0d		5-Nov-13 17*	◆ ESER # 2 Bond Issue Election																															

# ESER 1 – Budget Overview



Earthquake Safety & Emergency Response Bond

Project Phase	PSB	NFS	AWSS	Total
Pre-Bond Expenditure	5,369,492	1,015,669	1,316,963	7,702,124
Pre-Design / Planning	1,505,637	1,712,831	5,425,000	8,643,468
Design	22,775,827	6,970,500	11,790,000	41,536,327
Construction Administration	14,415,929	5,791,000	14,720,000	34,926,929
Construction	194,933,115	48,510,000	69,148,037	312,591,152
<b>Subtotal</b>	<b>239,000,000</b>	<b>64,000,000</b>	<b>102,400,000</b>	<b>405,400,000</b>
Accountability/CGOBOC/COI	4,000,000	1,100,000	1,800,000	6,900,000
<b>ESER Total</b>	<b>243,000,000</b>	<b>65,100,000</b>	<b>104,200,000</b>	<b>412,300,000</b>

# ESER 1– Financing



Earthquake Safety & Emergency Response Bond

Component	Budget	First Bond	Second Bond*	Total Funding	Future Sales
PSB	239,000,000	66,596,284	160,620,973	227,217,257	11,782,743
NFS	64,000,000	3,627,397	21,073,913	24,701,310	39,298,690
AWSS	102,400,000	8,396,929	31,505,626	39,902,555	62,497,445
Accountability/CGOBOC/COI	6,900,000	899,390	1,334,488	2,233,878	4,666,122
<b>Total</b>	<b>412,300,000</b>	<b>79,520,000</b>	<b>214,535,000</b>	<b>294,055,000</b>	<b>118,245,000</b>

\*Tentative Receipt of Second Bond Sale Proceeds in February 2012

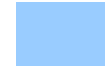
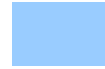
# ESER 1– Expenditures



Earthquake Safety & Emergency Response Bond

Component	Budget	Expenditures and Encumbrances	Percentage of Budget	Balance
PSB	239,000,000	11,207,195	4.69%	227,792,805
NFS	64,000,000	3,103,035	4.85%	60,896,965
AWSS	102,400,000	1,643,503	1.60%	100,756,497
Accountability/CGOBOC/COI	6,900,000	641,367	9.30%	6,258,633
<b>Subtotal</b>	<b>412,300,000</b>	<b>16,595,100</b>	<b>4.03%</b>	<b>395,704,900</b>
<b>Other Costs (Debt Service)</b>		<b>4,906,970</b>		
<b>Total Expenditures</b>		<b>21,502,070</b>		

# Conclusion



## Questions - Discussion



San Francisco  
**Water**  
**Power**  
**Sewer**

Services of the San Francisco Public Utilities Commission



EARTHQUAKE SAFETY AND EMERGENCY RESPONSE BOND