

Neighborhood Fire Stations:

Focused Scope Projects Update

Presentation to the SFFD Commission

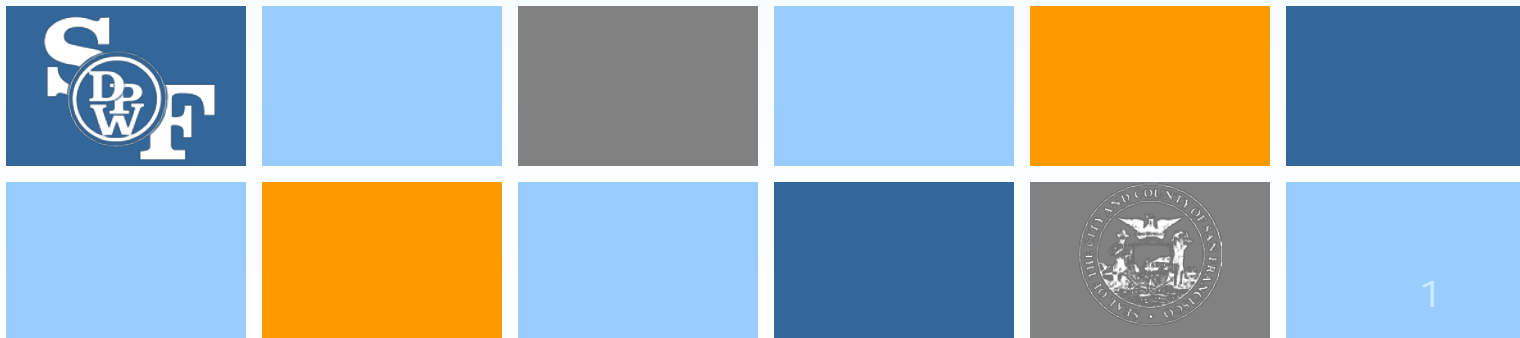
April 14, 2011

Agenda:

- Background
- Focused Scope Project Locations
- Schedule



EARTHQUAKE SAFETY AND EMERGENCY RESPONSE BOND



Earthquake Safety & Emergency Response (ESER 1) Bond



Earthquake Safety & Emergency Response Bond

\$412.3M General Obligation Bond Authorized in June 2010 with approval by 79.4% of voters

- **Neighborhood Fire Stations** **\$65.1**
- **Auxiliary Water Supply System** **\$104.2**
- **Public Safety Building (includes
Mission Bay Fire Station)** **\$243.0**

Neighborhood Fire Stations

Key Facilities Components



Earthquake Safety & Emergency Response Bond

A. Structural System

B. Emergency Response Components

- Emergency generators
- Building egress and access
 - Apparatus doors
 - Driveways and walkways
 - Front door access

C. Health and Safety Components

- Water intrusion
 - Roofs
 - Windows
 - Showers
- Food preparation areas
- Heating and ventilating systems

Facility Component

Condition Ratings

(assigned by A/E assessment):

- Severe: Failure imminent
- Serious: Impaired operability
- Moderate: Minor deterioration

Neighborhood Fire Stations Concurrent Renovation Strategies



Earthquake Safety & Emergency Response Bond

Focused Scope Program

- Correct severe deficiencies of selected building components
- Assure station functionality for 8-10 years

Comprehensive Renovation Program

- Correct all deficiencies pertaining to emergency response and health and safety issues
- Renovate, renew, or replace major building systems to assure station functionality of at least 15 years

Seismic Improvement Program

- Improve seismic performance to conform with current building codes
- Complete a comprehensive renovation as described above

Neighborhood Fire Stations Project Development Process



Earthquake Safety & Emergency Response Bond

Site Surveys and Scope Selection

- SFFD, DPW and Consultant Team
- Reporting, Analysis and Scope Selection
- Next steps

Weekly Meetings

- SFFD, DPW and Consultant Team

Monthly Reports

- Project Updates
- Financial Updates

Memorandum of Understanding

- Roles, Responsibilities, and Project Coordination

Neighborhood Fire Stations Projects List



Earthquake Safety & Emergency Response Bond

	\$ Millions
Seismic Improvement Projects	
Station 05	
Station 22	
Station 43	
Total	\$21M

Comprehensive Renovation Projects	
Station 02	
Station 36	
Total	\$7M

	\$ Millions
Focused Scope Projects	
Station 06	
Station 13	
Station 15	
Station 17	
Station 18	
Station 28	
Station 38	
Station 40	
Station 41	
Station 42	
Station 44	
Total	\$4.1M

	2011				2012				2013				2014				2015				2016			
	1	2	3	4	1	2	3	4	1	2	3	4	1	2	3	4	1	2	3	4	1	2	3	4
Focused Scope Projects - Construction																								
Comprehensive and Seismic Projects - Construction																								

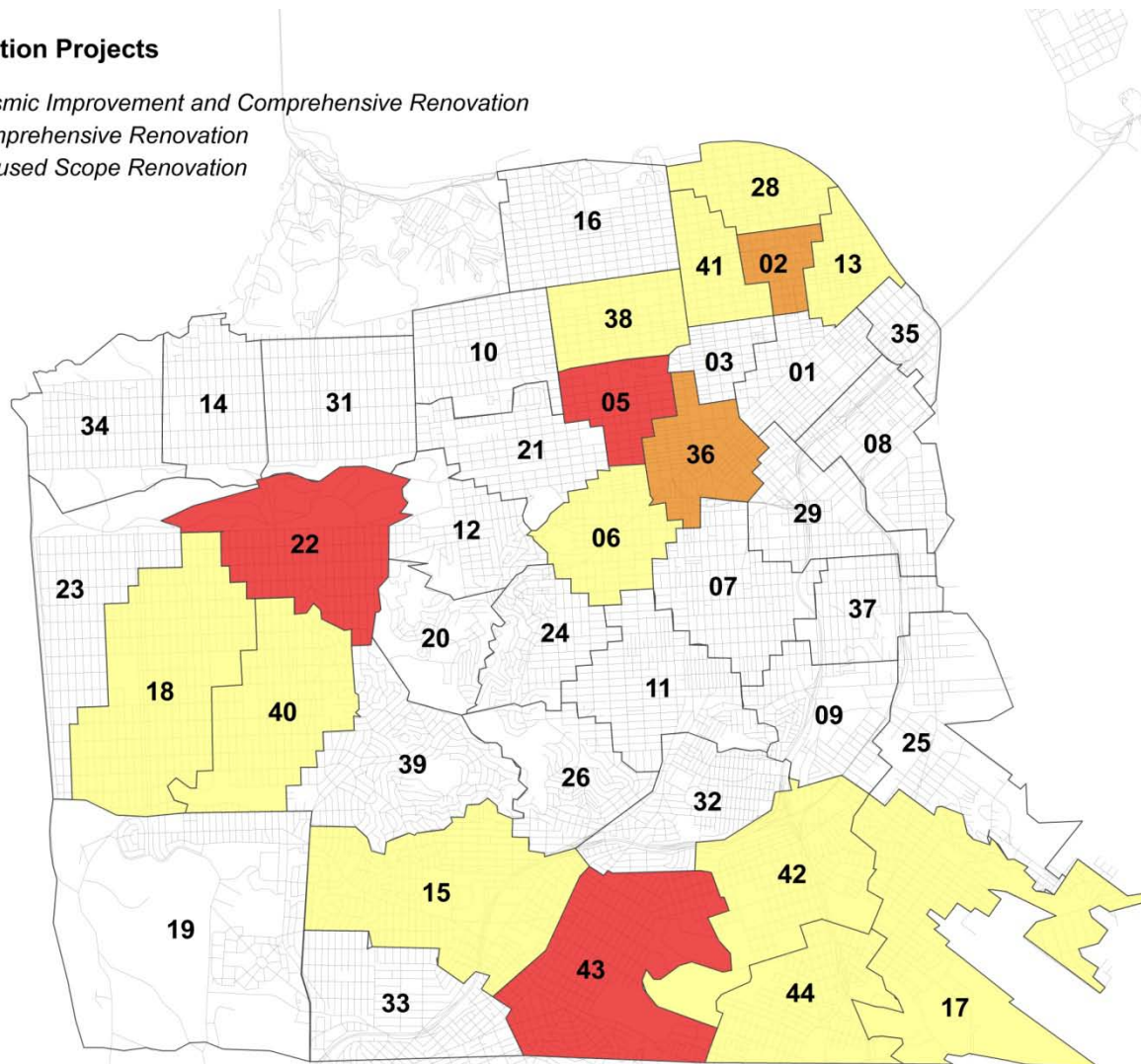
Neighborhood Fire Stations Project Locations



Earthquake Safety & Emergency Response Bond

Fire Station Projects

- Seismic Improvement and Comprehensive Renovation
- Comprehensive Renovation
- Focused Scope Renovation

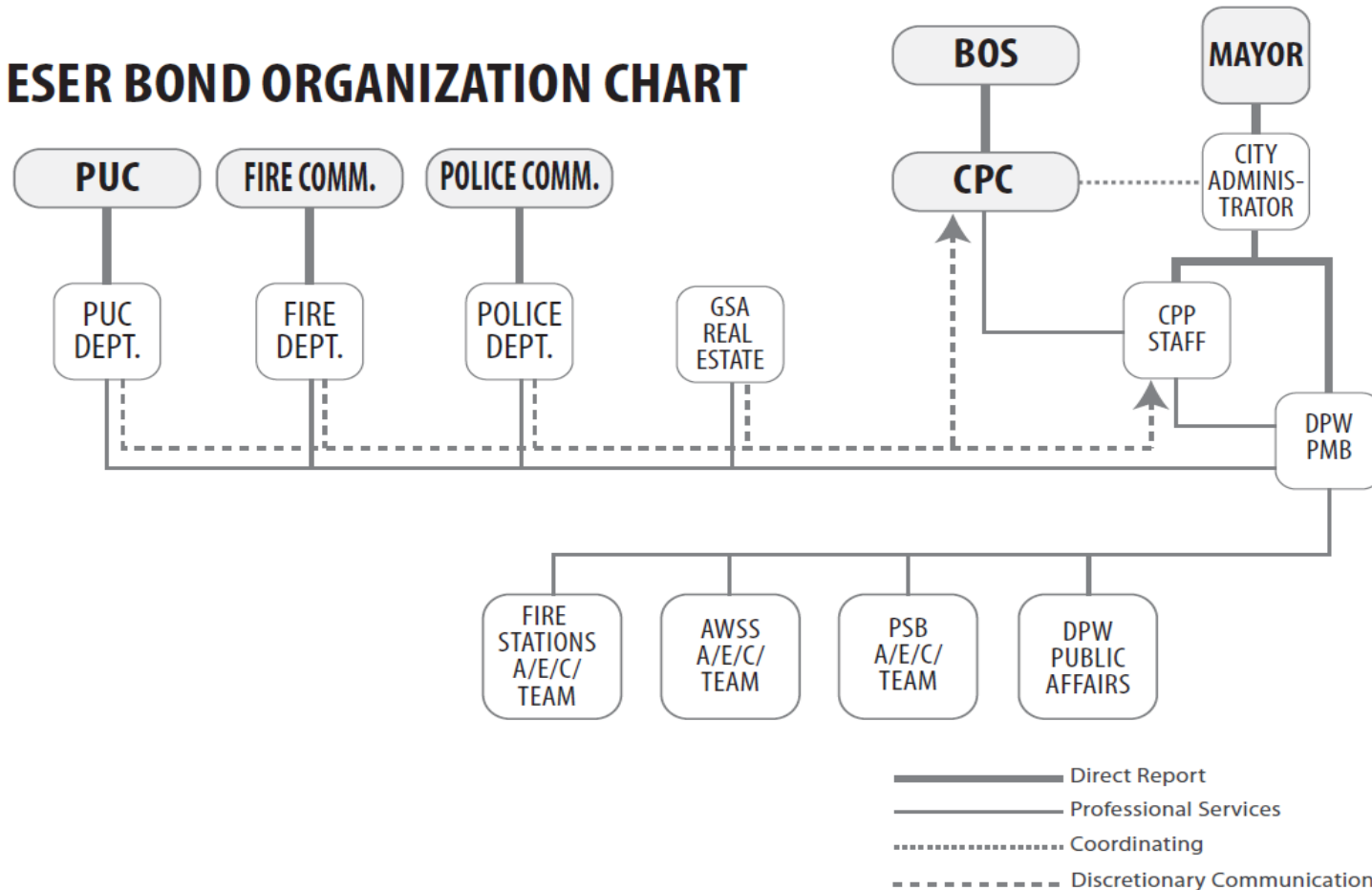


ESER 1 Bond Organization



Earthquake Safety & Emergency Response Bond

ESER BOND ORGANIZATION CHART





Questions - Discussion

